

Unisteri[®] SL

Standard Line - Steam Sterilizer



Great technology Compact design

- Minimum space required
- High efficiency
- Easy installation

Unisteri® SL – Revolutionary Construction

The MMM proven compact steam sterilizer Unisteri® SL with a chamber volume of 73, 160 or 254 liter now comes with a big touch screen.

This revolutionary new steam sterilizer is designed to meet the particular sterilization needs of surgeries, outpatient clinics, polyclinics, and central sterile supply departments (CSSD) for the efficient and economic processing of instruments, linen, heat resistant plastics and other medical devices.

Conforming to standards

This state-of-the-art steam sterilizer complies with all relevant standards and guidelines and makes you feel confident: 93/42/ECC, EN 285, EN 61010, EN 61326-1. The processes can be validated according to EN ISO 17665.

Easy installation

Installation sites such as day care or outpatient clinics often do not provide clean steam supply or demineralized water. **Unisteri® SL** can be equipped with an electrical steam generator and an water treatment device independent. This makes the steam sterilizer independent from media supply on site. Costs for constructional preparation and installation are reduced to a minimum: Only a fresh water supply, an electrical outlet for high voltage, and a drain are required for installation.

Easy operation

The ergonomic 8.4" colour touch screen of the compact sterilizer **Unisteri® SL** excels in its ease of operation. The program menus are clearly laid out and self-explanatory. All information such as temperature and pressure course as well as remaining cycle time are shown during cycle run. For extra safety, the operator menu has four levels protected by different pass words allowing the authorized personnel to access all relevant parameter entries.

Door system

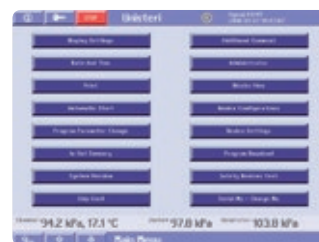
The door is opened and closed manually with very little effort. Tight closing is supported by an electric motor.



Program selection



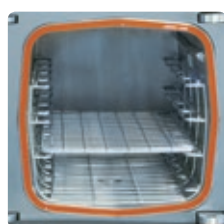
Program information



Main menu



Chamber loading option:
cart



Chamber loading option:
shelves



Chamber loading option:
basket



Chamber loading option:
container



Steam operated door seals



Safe sterilization

For a maximum of process safety, the steam pressure is controlled by absolute pressure transducers independent from fluctuations of the atmospheric pressure. The temperature course in the sterilization chamber is measured by PT 100 sensors. Each value measured is continually compared with the preset values stored in the control system in order to check for any deviation. A double set of pressure and temperature transducers, working independently from each other, ensure reliable control and recording of the process parameters.

Reliable process control and documentation

The double microprocessors of the control system ensure independent process control and parameter monitoring on the one hand and cycle recording and data documentation on the other. The cycle diagram and parameter information are displayed on the touch screen. By means of the MMM "Printer Archive" all data can be transferred to an external PC. The MMM tracking and tracing system EcoSoft allows you both to store and archive the data and also to print the batch file on an A4 printer.

Individual and flexible

Unisteri® SL is available as single or double door pass-through unit. Pass-through machines can be integrated into a full scale sterilizer row of a CSSD. Depending on your site situation, you can choose between a built-in steam generator (ED) and a connection to an external steam supply (FD). Comprehensive accessories, various transport trolleys and individual chamber inserts allow for optimum versatility of the sterilizer to be adapted to different installation sites and customer specific sterilization needs.

Environment and service

Unisteri® SL is extremely environmentally friendly: Low heat emission, low noise levels, and a reduced weight owing to the use of high quality plastics instead of steel, as well as an integrated water saving device. At the end of its lifetime, all essential components of **Unisteri® SL** can be recycled.

Service is made comfortable, as the integrated self-diagnostics and service program allow for fast trouble shooting. All parts can be accessed easily.



Equipment & Programs

Standard equipment

- Single or double door
- Sterilization chamber, doors and chamber jacket are made of high quality CrNiMo steel (AISI 316L)
- Grained chamber surface Ra 1.25 µm
- Steam operated door seals
- Automatic start
- 5 sterilization programs, 3 test and service programs
- Integrated waste water cooling
- Integrated water saving device
- Self-diagnostics system
- Chamber loading by either inserts or rails
- Chrome-nickel steel sheet panelling
- Door opening to the left
- High output water ring vacuum pump

Options

- Electric steam generator with automatic desalting device, either 7.5 kW, 15 kW or 22.5 kW
- Loading accessories such as shelves and racks
- Customer specific program
- Chip card and chip card reader
- Loading cart (for chamber rails)
- Transport trolleys
- Water treatment system
- Media monitoring
- Uninterrupted power supply for controller
- Polished chamber Ra 0.8 µm / 0.125 µm
- Build-in steam generator
- connection to external cooling circuit for vacuum pump
- Air detector
- Door opening to the right

Sterilization programs

P1 Warm up 134° C

Sterilizer preheating program

P2 Universal 134° C

For wrapped devices
sterilization time 7 minutes

P3 Universal Container 134° C

For wrapped devices with super drying
sterilization time 7 minutes

P4 Rubber 121° C

For wrapped devices made of glass, rubber or plastics
sterilization time 20 minutes

P8 to P20 Special

Program parameters can be set to customers requirements (sterilization safety provided)

Test programs

P5 BD test 134° C

Steam penetration test
holding time 3.5 minutes

P6 Vacuum test

Air leakage test

P7 Service

Service program for easy control and maintenance



Model	Doors	STU	Outer dimensions (H x W x D mm)	Inner chamber dimensions (H x W x D mm)	Chamber volumes ltr
336	1	1	1500 x 600 x 800	320 x 320 x 625	73
336	2	1	1500 x 600 x 860	320 x 320 x 625	73
636	1	2	1720 x 690 x 967	670 x 350 x 700	160
636	2	2	1720 x 690 x 1022	670 x 350 x 700	160
559	1	*	1720 x 850 x 1247	509 x 509 x 990	254
559	2	*	1720 x 850 x 1302	509 x 509 x 990	254

Technical changes reserved. * The dimensions are not standardized for the sterilization unit (STU) / Pressure vessel designed according to ASME.

Advantages

- Suitable for all kind of sterilization material
- Easy installation and operation
- Independent from media supply on site
- Small footprint
- Left or right door opening
- Water saving vacuum pump system
- PLC Controller with independent monitoring function
- Low energy steam generator (optional)

Loading options and accessories

Chamber loading option for baskets / container



Baskets / container
336: 010121243



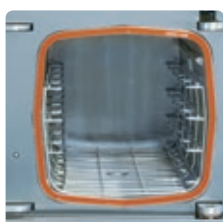
Sterilization basket
336/636/559: 010122051



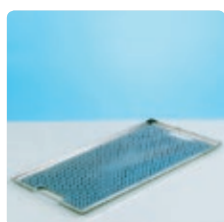
Sterilization container
in different sizes



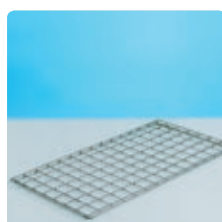
Chamber loading option for shelves / trays



Shelves
336: 010121244
636: 010121245
559: 010483816



Perforated shelf
336/636: 010122063
559: 010122070



Grid tray
336: 010483010

Chamber loading option for carts



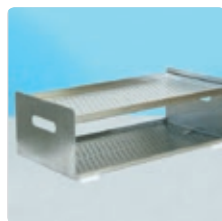
Cart

336: 010121242
559: 010121623
636: 010121627



Loading cart
1 shelf

336: 010122048
559: 010122067
636: 010122058



Loading cart
2 shelves

336: 010122049
559: 010122069
636: 010122062



Loading cart
(dental-) cassettes

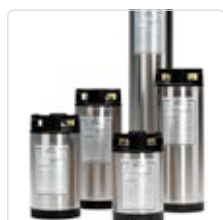
336: 010122047
559: 010122068
636: 010122061



Loading cart
liquids sterilization

336: 010122046
636: 010123139

Accessories



Water treatment
for demineralized water



Transport trolley

336: 010122045
559: 010122066
636: 010122057



MMM Group

MMM has been operating worldwide as one of the leading system providers in the service of health since 1954. With a complete range of products and services relating to all aspects of cleaning, disinfection and sterilization systems for the areas of **Healthcare** and **Life Science**, MMM has positioned itself as a crucial quality and innovation driver in the German and international

market. Our products are individually adapted to the requirements of our customers all over the world. The high vertical range of manufacturing in our production plants ensures that we fulfil the strictest demands of quality in the medical technology sector. More than 1100 employees apply their expertise and dedication to the mission of the MMM Group: **Protecting human health.**



Health
made in Germany

MMM Münchener
Medizin Mechanik GmbH
Simmelweisstraße 6
82152 Planegg / Munich, Germany
Phone: +49 89 89918-0
Fax: +49 89 89918-118
www.mmmgroup.com

