

Racks and inserts

for Uniclean® PL II - Premium Line



- User-friendly
- Ergonomic
- Safe
- Modular

Safe – flexible – ergonomic

The MMM rack and accessories range for the Uniclean® PL II washer-disinfector has been developed in close co-operation with medical device manufacturers and users in hospitals.

This practicality is readily apparent. The result is a flexible range of loading racks with appropriate insert modules for cleaning simple to highly complex medical devices.

The MMM racks convince through:

- Perfect cleaning and drying performance
- User-friendly rack loading from all 4 sides
- Volume-optimised loading configurations which are low in spray shadow
- Modular rack concepts for flexible applications
- Stable constructions made of stainless steel
- Design open to all four sides
- Self-draining washer duct piping
- Symmetrical JANUS rack dock for optimal water distribution on all levels
- Loading trolley rotation possible in both directions (also by 180°) during loading
- Ergonomic and safe handling of loads for all applications
- CoolTouch handles
- Multi-level racks with connections for hollow instruments

Further accessories such as the ergonomic, two-tier rack rest systems simplify rack logistics and order in the CSSD.



Table of contents

1. Transport trolley	4
2. Multi-level racks	8
3. MIS/eye racks and modules	14
4. Robotics racks and modules	22
5. Anaesthetic racks	26
6. Container racks	28
7. Bottle and glassware racks	30
8. Inserts	34
9. Small parts/nozzles	38
10. Instrument racks	50
11. Configuration examples	52



1. Transport trolley

Transport trolley UPL 15

Application/function:
Transporting, loading and unloading of cleaning racks.
Load capacity: 1 loading rack

Trolley with chassis, push handle, mounted support surface with trough-shaped recess, drainage fittings and removable collection container beneath the support surface.
Support surface with integrated guide and track rollers for loading racks. Four universal swivel casters, two of which with parking mechanisms. Locking device for coupling and uncoupling the trolley and automatic transport lock for loading racks. Trolley structure and wheel fixtures CrNi steel.
Support surface high-gloss polished.
Track rollers quiet-running design with rubber tyres.

Bottle integrated as collection container.

010109308

Note: Can be used for Uniclean PL II racks.

Technical data

Loading height 810 mm
4 track rollers, 2 with parking brakes
Caster diameter 125 mm
Material AISI 304

Accessories

Collection container 010125441
(included in standard scope of supply)

Dimensions

W = 660 x H = 1,060 x D = 1,060 mm

Empty weight

25 kg



Collection container TW UCL PL II 15

Application/function:
Collection container for TW 010109308 with drainage fittings beneath the support surface.

010125441

Note: Can only be used with TW 010109308

Dimensions

D = 85 mm, H = 220 mm

Empty weight

0.5 kg



Transport trolley UPL 15, without drain

Application/function:

Transporting, loading and unloading of cleaning racks.

Load capacity: 1 loading rack

Trolley with chassis, push handle, mounted support surface with trough-shaped recess without drainage fittings. Support surface with integrated guide and track rollers for loading racks.

Four universal swivel casters, two of which with parking mechanisms. Locking device for coupling and uncoupling the trolley and automatic transport lock for loading racks. Trolley structure and wheel fixtures CrNi steel. Support surface high-gloss polished.

Track rollers quiet-running design with rubber tyres.

10497835

Note: Can be used for Uniclean PL II racks.

Technical data

Loading height 810 mm	Caster diameter 125 mm
4 track rollers, 2 with parking brakes	Material AISI 304

Dimensions

W = 660 x H = 1,060 x D = 1,060 mm

Empty weight

24.5 kg



Transport trolley UPL 15, height adjustable

Application/function:

Transporting, loading and unloading of cleaning racks

Load capacity: 1 loading rack

Trolley with chassis, push handle, mounted support surface and guide and track rollers integrated in the support surface for loading racks. Support surface high-gloss polished. Drainage fittings and removable collection container below the support surface. Four universal swivel casters, two of which with parking mechanisms. Locking device for coupling and uncoupling the trolley and automatic transport lock for loading racks. Trolley structure and wheel fixtures CrNi steel. Support surface high-gloss polished. Track rollers quiet-running design with rubber tyres.

Bottle integrated as collection container.

A lift cylinder is positioned under the transport plate, which is used to automatically adjust the height of the upper loading level via two manually operated buttons. The buttons are located on both ends of the ergonomically designed handles. In addition to the fixed minimum lifting position, two additional heights (loading height WD and maximum lifting position) can be set using the microswitch. An additional button installed between the two handles can be used to move automatically to these positions.

010109309

Note: Can be used for Uniclean PL II racks.

Technical data

Loading height 810 mm	Caster diameter 125 mm
On-site height preadjustment: 660/810/960 mm (each to the upper edge of the support surface)	Material AISI 304
4 track rollers with parking brakes	Electrical connection 220 V/50-60 Hz

Dimensions

W = 660 x H = 1,095 x D = 1,077 mm

Empty weight

55 kg





2. Multi-level racks



Rack 1-level UPL 15

Application: Utensils, bowls, various items to be sterilized.
Basic rack for insert modules.

010109310

Typical load: Depending on the application.

Accessories	MMM No.	No.	Capacity per insert module
Insert for OR shoes up to size 42	010109348	3	10 OR shoes
Insert for OR shoes up to size 48	010109347	3	6 OR shoes
Insert for kidney basins / OR shoe soles	010109343	3	10 kidney basins / OR shoe soles
Insert for bowls 125	010109344	2	12 bowls 125
Insert for bowls 200	010109345	2	6 bowls 200
Insert for OR lamp handles	010109346	3	15 OR lamp handles

Dimensions	Empty weight
W=640 x H=290 x D=835 mm	5 kg



Rack 2-level UPL 15

Application: Utensils, bowls, OR shoes, kidney basins, various items to be sterilized.
Basic rack for insert modules. 4 connections with blind plugs per intermediate level (M8x1).

010109311

Typical load:
Clear tier height: 278 mm

Accessories	MMM No.	No.	Capacity per insert module
Insert for OR shoes up to size 42	010109348	6	10 OR shoes
Insert for OR shoes up to size 48	010109347	6	6 OR shoes
Insert for kidney basins / OR shoe soles	010109343	6	10 kidney basins / OR shoe soles
Insert for bowls 125	010109344	4	12 bowls 125
Insert for bowls 200	010109345	4	6 bowls 200
Insert for OR lamp handles	010109346	6	15 OR lamp handles

Dimensions	Empty weight
W=640 x H=374 x D=835 mm	10 kg



Rack 2-level S UPL 15

Application: OR shoes up to size 48 (bottom only), bowls, kidney basins.
4 connections with blind plugs per intermediate level (M8x1).

010109312

Typical load:
Clear tier height: Bottom: 395 mm, top: 150 mm

Accessories	MMM No.	No.	Capacity per insert module
Insert for OR shoes (bottom level only) up to size 42	010109348	3	10 OR shoes
Insert for OR shoes (bottom level only) up to size 48	010109347	3	6 OR shoes
Insert for kidney basins / OR shoe soles	010109343	6	10 kidney basins / OR shoe soles
Insert for bowls 125	010109344	4	12 bowls 125
Insert for bowls 200	010109345	4	6 bowls 200
Insert for OR lamp handles	010109346	6	15 OR lamp handles

Dimensions	Empty weight
W=640 x H=490 x D=835 mm	10 kg



Rack 3-level UPL 15

Application: Surgical instruments, bowls, kidney basins.
4 connections with blind plugs per intermediate level (M8x1).

010109313

Typical load:
Clear tier height: 165 mm
9 instrument trays [W=255 x H=100 x L=595 mm]

Accessories	MMM No.	No.	Capacity per insert module
Insert for kidney basins / OR shoe soles	010109343	9	10 kidney basins / OR shoe soles
Insert for bowls 125	010109344	6	12 bowls 125
Insert for bowls 200	010109345	6	6 bowls 200
Insert for OR lamp handles	010109346	9	15 OR lamp handles

Dimensions	Empty weight
W=640 x H=488 x D=835 mm	13 kg



Rack 4-level UPL 15

Application: Surgical instruments.
4 connections with blind plugs per intermediate level (M8x1).

010109314

Typical load:
Clear tier height: 108 mm
12 instrument trays [W=255 x H=70 x L=595 mm]

Dimensions	Empty weight
W=640 x H=544 x D=835 mm	16 kg



Rack 5-level UPL 15

Application: Surgical instruments.
4 connections with blind plugs per intermediate level (M8x1).

010109315

Typical load:
Clear tier height: 73 mm
15 instrument trays [W=255 x H=50 x L=595 mm]

Dimensions	Empty weight
W=640 x H=574 x D=835 mm	19 kg



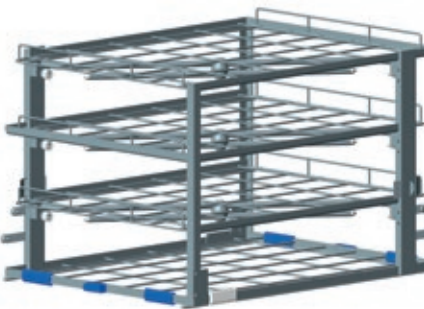
Rack flex 4-level UPL

Application: Surgical instruments. 3 removable levels incl. rotating arms.
4 connections with blind plugs per intermediate level (M8x1).

010508720

Typical load:
Clear tier height: 100 mm
12 instrument trays [W=255 x H=70 x L=595 mm]

Dimensions	Empty weight
W=640 x H=544 x D=835 mm	16 kg



Rack for level storage

Application: For the placement or secure storage of max. 4 level grids 010510286 for the rack flex 4-level UPL 15 010508720.

010510265

The rack for level storage can be cleaned and disinfected in the Uniclean® PL II - but without level grids.

Dimensions	Empty weight
W=640 x H=514 x D=835 mm	17 kg



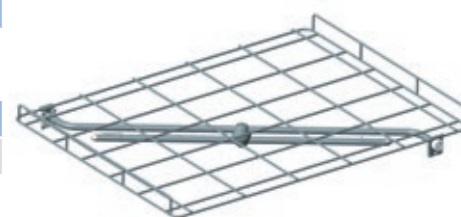
Level grid with water supply complete

Application: Level grid with complete water supply (rotating arm, end cap). Only suitable for rack flex 4-level UPL 010508720 and rack level rest complete 010510265.

010510286

As replacement grid level.

Dimensions	Empty weight
W=593 x H=97 x D=771 mm	3 kg





3. MIS/eye racks and modules



Rack 3-level with MIS strip 15

Application: Surgical instruments and MIS instruments.
With max. 30 connections for MIS instruments. 4 connections with blind plugs (M8x1).

010509986

Typical load:
Clear tier height: 180 mm
Instrument length: max. 320 mm
9 instrument trays [W=255 x H=50 x L=595 mm]

Including the following standard equipment:

- 2 x MIS supply strips 15 A complete with 30 connections for MIS instruments
- Mesh tray (fine-meshed)

Accessories	MMM No.	No.	Capacity per insert module
MIS supply strip 15 A complete (additional)	010508892	2	Connections: 10 Luer-Locks male, 2 Luer-Locks female, 3 rinsing holders Ø 1 12
Rack with lid / small parts rack	010491059		
Kidney basins / OR shoe soles	010109343	6	10 kidney basins / OR shoe soles
Insert for OR lamp handles	010109346	6	15 OR lamp handles
Insert for bowls 125	010109344	4	12 bowls 125
Insert for bowls 200	010109345	4	6 bowls 200

Dimensions	Empty weight
W=640 x H=600 x D=835 mm	16 kg



Rack 4-level with MIS strip 15

Application: Surgical instruments and MIS instruments.
With 30 connections for MIS instruments. 4 connections with blind plugs (M8x1).

010508889

Typical load:
Clear tier height: 100 mm
Instrument length: max. 320 mm
12 instrument trays [W=255 x H=50 x L=595 mm]

Including the following standard equipment:

- 2 x MIS supply strips 10508892 with 30 connections for MIS instruments
- Mesh tray (fine-meshed)

Accessories	MMM No.	No.	Capacity per insert module
MIS supply strip 15 A complete (additional)	010508892	2	Connections: 10 Luer-Locks male, 2 Luer-Locks female, 3 rinsing holders Ø 1 12
Rack with lid / small parts rack	010491059		

Dimensions	Empty weight
W=640 x H=600 x D=835 mm	17 kg



MIS supply strip 15 A complete

Application: MIS instruments.

As a replacement or additional supply strip appropriate for rack 3/4-level with MIS supply strip 010509986 / 010508889.

010508892

Typical load:

15 MIS instruments appropriate for rack 3/4-level with MIS strip 010509986/010508889

Including the following standard equipment:

- 10 Luer-Locks male
- 2 Luer-Locks female
- 3 rinsing holders Ø 1 12

Dimensions

Ø 37 x L=617.8 mm



Rack MIS

Application: MIS instruments, ENT, normal surgical instruments.

4 connections with blind plugs (M8x1) per level for further hollow items (flush tubes).

010488054

Typical load:

- 1 layer for max. 116 connections
- 2 layers for 6 instrument trays [W=255 x H=50 x L=595 mm].
- Clear tier height bottom level: 80 mm
- Clear tier height middle level: 140 mm

Including the following standard equipment:

- 22 adapter nozzles small with silicone cap 19x1.5x48
- 18 Luer-Lock adapters M8x24
- 8 nozzles with side holes Ø 0 4x40 / M8x1
- 4 nozzles with side holes Ø 0 6x50 / M8x1
- 10 nozzles with side holes Ø 0 6x150 / M8x1
- 8 nozzles with side holes Ø 0 4X120 / M8x1
- 4 nozzles with side holes Ø 0 3X120 / M8x1
- 12 nozzles with side holes Ø 0 3X70 / M8x1
- 8 nozzles with side holes Ø 0 4X70 / M8x1
- 12 spring clips small
- 8 spring clips large
- 2 Luer-Lock nozzles female 8x1mm screwable
- 20 tube spouts with thread M8x1 incl. silicone tube 3x1,5x200 and LL adapter male for tube neck DM 4
- 3 supporting rails with silicone mat

Accessories	MMM No.	No.	Capacity per insert module
010115227 rack with lid/ small parts rack (additional)	010491059		
Tube drums small	010114078	3	1 flush tube
Insert for kidney basins (middle level only)	010109343	3	10 kidney basins
Insert for OR lamp handles (middle level only)	010109346	3	15 OR lamp handles
Insert for bowls 125 (middle level only)	010109344	2	12 bowls 125
Insert for bowls 200 (middle level only)	010109345	2	6 bowls 200

Dimensions

W=640 x H=527.5 x D=835 mm

Empty weight

28 kg



Mesh tray 772x578 mm

Application: For directly loading instruments for the rack 3-level/4-level with MIS supply strip (010127199, 010109330) and for rack MIS (010488054).

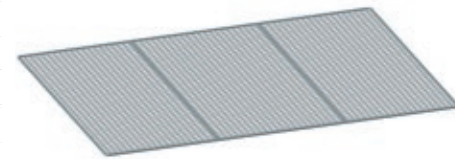
010489293

Dimensions

W=578 x H= 7 x D=772 mm

Empty weight

3 kg



Rack MIS with 2 module levels

Application: MIS instruments, eye instruments, ENT, normal surgical instruments.

010125437

Typical load:

- 2 layers for MIS and eye insert modules
- 2 layers for 6 instrument trays W=255 x H=50 x L=595 mm
- Clear tier height bottom level: 90 mm
- Incl. 010491059 small parts rack 100x50x200 mm

Accessories	MMM No.	No.	Capacity per insert module
Tube drums small	010114078	3	1 flush tube
MIS module long	010508028	4	10 MIS instruments
MIS module short	010508029	2	18 MIS instruments
Eye module	010508031	4	10 eye instruments

Dimensions

W=633 x H=609 x D=835 mm

Empty weight

16 kg



MIS module long

Application: MIS instruments. All screwable nozzles with M8x1 fine thread.

010508028

Typical load:

- 10 connections for MIS instruments with a maximum length of 580 mm, suitable for rack MIS with 2 module levels 010125437

Including:

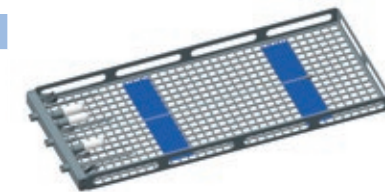
- 3 adapter nozzles small with silicone cap
- 2 nozzles with side holes Ø 0 3x120 mm
- 3 nozzles with side holes Ø 0 4x120 mm
- 2 Luer-Lock nozzles male
- 2 LL adapters female for tube neck DM 4
- 2 silicone tubes 3x1.5x500
- 2 LL adapters male for tube neck DM 4
- 3 spring clips small
- 2 spring clips large
- 2 silicone mats 250 mm x 56 mm

Dimensions

290 x H=40 x D=689 mm

Empty weight

3.1 kg



MIS module short

Application: MIS instruments. All screwable nozzles with M8x1 fine thread.

010508029

Typical load:

- 18 connections for MIS instruments with a maximum length of 260 mm, suitable for rack MIS with 2 module levels 010125437.

A maximum of 2 MIS modules short can be used per rack.

Including:

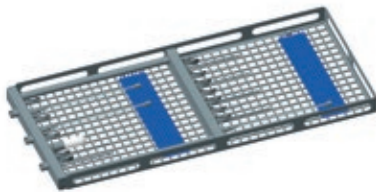
- 2 adapter nozzles small with silicone cap
- 1 nozzle with side holes Ø 0 3x70
- 3 nozzles with side holes Ø 0 3x120
- 2 nozzles with side holes Ø 0 4x40
- 2 nozzles with side holes Ø 0 4x70
- 4 nozzles with side holes Ø 0 4x120
- 4 Luer-Lock nozzles male
- 4 LL adapters female for tube neck DM 4
- 4 silicone tubes 8x1.5x200
- 4 LL adapters male for tube neck DM 4
- 10 spring clips small
- 2 spring clips large
- 2 silicone mats 250 mm x 56 mm

Dimensions

W=290 x H=45 x D=687 mm

Empty weight

2.5 kg



Module for eye instruments

Application: Eye instruments. All screwable nozzles with M8x1 fine thread.

010508031

Typical load:

- 10 connections for eye instruments (for a maximum fine cannula length up to 200 mm) suitable for rack MIS with 2 module layers 010125437

Including:

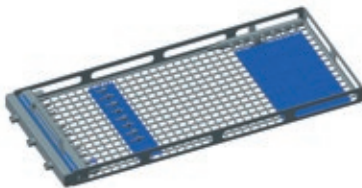
- 1 eye tray double filter complete
- 1 flush strip straight incl. tube adapter, silicone connection tube, mount and 7 Luer-Lock connections male
- 8 tube spouts with thread
- 1 silicone tube 3x1.5 mm (1 m for shortening as required)
- 4 LL adapters female for tube neck DM 4
- 4 tube spouts conical
- 1 silicone tube 6x1.5x415
- 1 Luer-Lock connector male
- 1 Luer-Lock end cap
- 1 silicone mat 250x56 mm
- 1 silicone mat 250x152 mm

Dimensions

W=291.5 x H=70 x D=689 mm

Empty weight

3.6 kg



Insert tray eye instruments

Application: Eye instruments.

010119757

Typical load:

- 1 cataract set

Set consisting of 4 parts:

- 1 tray for hollow instruments
- 1 tray for standard instruments
- 1 lid
- 1 small parts rack

Suitable for flush strip straight: 010119758

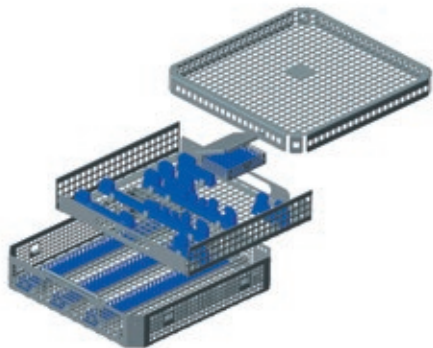
Accessories	MMM No.	No.	Capacity per insert module
Flush strip straight	010119758	1	7 Luer-Lock connections male

Dimensions

W=240 x H=70 x D=210 mm

Empty weight

3 kg



Flush strip straight

Application: E.g. eye instruments. Included as standard in eye module 010508031.

010119758

Typical load:

Straight connection

Including:

- 7 Luer-Lock connections male
- Silicone tube 6 x 1.5 mm 500 mm with tube adapter M8x1
- Mount

Dimensions

ø 18 x L=206 mm



Flush strip angled

Application: e.g. eye instruments (in MIS module eyes long 010508031), MIS instruments.

010119759

Typical load:

90° angled connection

Including:

- 7 Luer-Lock connections male
- Silicone tube 6 x 1.5 mm 500 mm with tube adapter M8x1
- Mount

Dimensions

ø 18 x L=206 mm



Double filter for modules complete

Application: Eye modules, EndoWrist instruments da Vinci.

010504739

Standard in:

- Eye module 010109325
- EndoWrist instruments da Vinci

Dimensions

W=17.6 x H=97 x L=275 mm



Replacement filter for modules (set of 2 pieces)

Application: Eye modules, EndoWrist instruments da Vinci.

Only suitable for: Double filter for modules complete 010504739

010504955

Standard in:

- Eye module 010109325
- EndoWrist instruments da Vinci

Dimensions

W=17.6 x H=97 x L=275 mm



Securing bushing double filter (set of 2 pieces)

Application: For retrofitting the double filter for modules complete 010504739 for eye modules, EndoWrist instruments da Vinci.

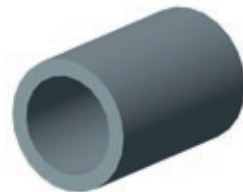
010504744

Standard in:

- Eye module 010508031
- Modules for EndoWrist instruments da Vinci 010488028 and 010504977

Dimensions

M8x1 / 5 x 12 mm



Threaded connection blind M15x1 (set of 4 pieces)

Application: For sealing the middle connection of MIS modules with 3 supply connections for use in rack MIS with 2 module levels with 2 supply connections.

010508853

4 pieces per packaging unit

Dimensions

M15x1



Silicone mat 250 mm x 530 mm

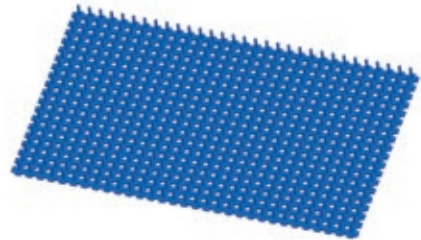
Application: Perforated blue silicone mat with flexible nobbles for storing instruments on a fine-meshed rack insert grid or in a DIN tray. Suitable for use in a Uniclean® PL II without edge, trimming as required.

010503483

Perforated, with nobbles, pattern 8x8 mm, without edge, for shortening as required. Colour: blue

Dimensions

W=250 x H=12 x L=530 mm



Rack with lid

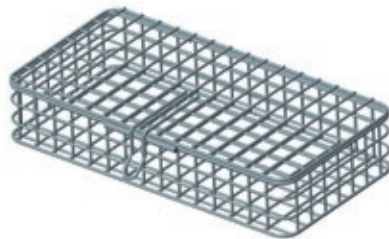
Application: Small part tray.

010491059

Standard in rack MIS with 2 module levels 010125437 and rack MIS 010488054

Dimensions

W=100 x H=50 x L=200 mm



Tube drum small

Application: For holding one flush tube.

010114078

Optional in:

- Rack MIS with 2 module levels 010125437
- Rack MIS 010488054

Dimensions

W=185 x H=85 x L=185 mm





4. Robotics racks and modules



Rack for robotic instruments

Application: da Vinci instruments S or Si of IS2000/3000 series with diameter 5 and 8 mm.

010488053

Typical load:

- Upper level for module robotics instruments da Vinci
 - Lower levels for 3 instrument trays [W=255 x H=50 x L=595 mm].
- Clear tier height bottom level: 180 mm

Accessories	MMM No.	No.	Capacity per insert module
Module EndoWrist instruments da Vinci S and Si	010488028	2	4 da Vinci instruments

Dimensions	Empty weight
W=640 x H=372 x D=835 mm	15 kg



Rack for robotic instruments long

Application: da Vinci Xi instruments of IS4000 series with diameter 8 mm and Xi Stapler.

010504975

Typical load:

- Upper level for module robotics instruments da Vinci
 - Lower level for 1 insert module for robotic instruments Xi or for 3 instrument trays [W=255 x H=50 x L=595 mm].
- Clear tier height bottom level: 180 mm

Accessories	MMM No.	No.	Capacity per insert module
Module EndoWrist instruments da Vinci Xi	010504977	2	4 da Vinci instruments
Module instruments da Vinci Xi Stapler	10504980	1	2 Staplers

Dimensions	Empty weight
W=640 x H=372 x D=835 mm	15 kg



Module for EndoWrist instruments da Vinci

Application: da Vinci, da Vinci S and da Vinci Si (Single Site) instruments of IS2000/3000 series with diameter 5 and 8 mm.

Only suitable for: Rack for robotic instruments 010488053

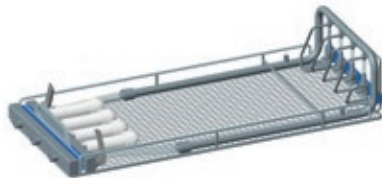
010488028

Typical load:

4 connections for robotic instruments da Vinci, da Vinci S and da Vinci Si (with additional connection adapters)

Accessories	MMM No.	No.	Capacity per insert module
Connection adapter 1/1 da Vinci (set of 4 pieces) for da Vinci Si (Single Site) instruments with 2 connections	010510586	1	4 da Vinci Si instruments
Connection adapter 2/1 da Vinci (set of 4 pieces) for da Vinci Si (Single Site) instruments with 3 connections	010510590	1	4 da Vinci Si instruments

Dimensions	Empty weight
W=290 x H=141 x D=692 mm	4 kg



Module for EndoWrist instruments da Vinci Xi

Application: da Vinci Xi instruments of IS4000 series with diameter 8 mm.

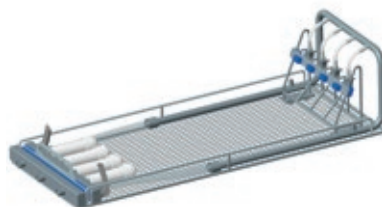
Only suitable for: Rack for robotic instruments long 010504975

010504977

Typical load:

4 connections for robotic instruments da Vinci Xi

Dimensions	Empty weight
W=290 x H=191 x D=769 mm	4 kg



Module for instruments da Vinci Xi Stapler

Application: da Vinci Xi instruments of IS4000 series with diameter 13 mm.

Only suitable for: Rack for robotic instruments long 010504975

010504980

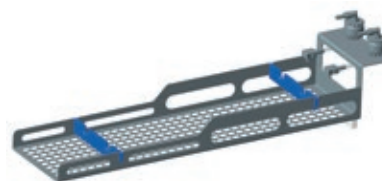
Typical load:

2 connections for robotic instruments da Vinci Xi Stapler

Including:

2 single filter elements for 2 Stapler instruments

Dimensions	Empty weight
W=191 x H=186.5 x D=773 mm	4 kg



Connection adapter 2/0 da Vinci (set of 4 pieces)

Application: Connection adapter 2/0 for EndoWrist instruments da Vinci with two connections on the housing part.

Only suitable for: Module for EndoWrist instruments da Vinci 010488028

010510581

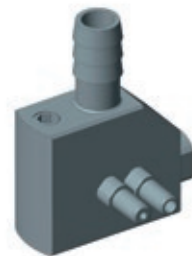
Typical load:

4 connections for robotic instruments da Vinci, da Vinci S. Included in standard equipment of module for EndoWrist

instruments da Vinci 010488028 and module for instruments da Vinci Xi Stapler 10504980.

Dimensions

W=33 x H=42 x D=23 mm



Connection adapter 1/1 da Vinci (set of 4 pieces)

Application: Connection adapter 1/1 for EndoWrist instruments da Vinci Si Single with one connection on the housing part and one connection on the shaft.

Only suitable for: Module for EndoWrist instruments da Vinci 010488028

010510586

Typical load:

4 connections for robotic instruments Si Single Site.

Not included in standard equipment of module for EndoWrist instruments da Vinci 010488028.

Dimensions

W=33 x H=42 x D=23 mm



Connection adapter 2/1 da Vinci (set of 4 pieces)

Application: Connection adapter 2/1 for EndoWrist instruments da Vinci Si Single Site with two connections on the housing part and one connection on the shaft.

Only suitable for: Module for EndoWrist instruments da Vinci 010488028

010510590

Typical load:

4 connections for robotic instruments Si Single Site.

Not included in standard equipment of module for EndoWrist instruments da Vinci 010488028.

Dimensions

W=33 x H=42 x D=23 mm





5. Anaesthesia racks

Rack anaesthesia drum

Application: Anaesthesia material, breathing tubes, breathing masks, breathing pouches.

010109332

Connections for up to 26 breathing tubes:

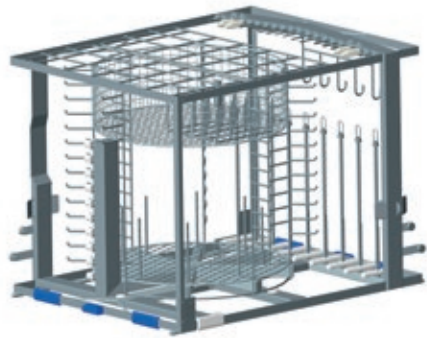
- 10 foldable tubes Ø 22 mm to 1500 mm length (of which 6 up to 1500 mm and 4 up to 2000 mm length)
- 4 foldable tubes Ø 22 mm to 500 mm
- 6 foldable tubes Ø 14 mm (of which 4 up to 1500 mm and 2 up to 1000 mm length)
- 6 suction tubes up to 500 mm length

Including:

- 4 nozzles with side holes Ø 0 3x70 mm
- 4 nozzles with side holes Ø 0 4x40 mm
- 6 nozzles with side holes Ø 0 4x70 mm
- 5 nozzles with side holes Ø 0 4x120 mm
- 12 nozzles with side holes Ø 0 6x50 mm
- 8 nozzles with side holes Ø 0 6x150 mm
- 9 nozzles with side holes Ø 0 8x340 mm
- 1 plug-on rack for up to 25 T-Y-I / connector pieces
- 3 connections with blind caps M8x1

Accessories	MMM No.	No.	Capacity per insert module
Plug-on rack for T-Y-I / connector material	010124981	4	25 AN material such as bushings
Tube drum small	010113330	3	1 flush tube

Dimensions	Empty weight
W=640 x H=620 x D=835 mm	23 kg



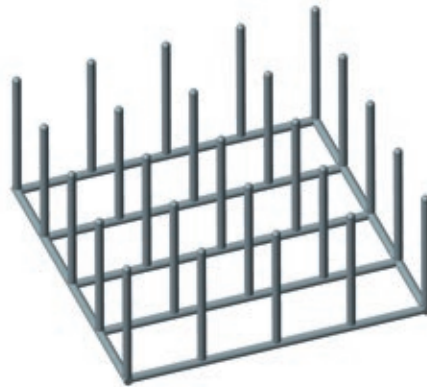
Plug-on rack AN material

Application: Plug-on rack for 25 AN material such as bushings.

010124981

For subsequent addition
Standard in AN rack 010109332

Dimensions
W=185 x H=85 x L=185 mm





6. Container racks



☐ Rack for 1/2 StU container with lid

Application: Sterile goods container with lid.

010109327

Typical load:

- 6 containers with lid, max. dimensions of container L=600 x W=300 x H=150 mm

Dimensions

W=640 x H=623 x D=835 mm

Empty weight

19 kg



☐ Rack for 1 StU container with lid

Application: Sterile goods container with lid.

010109328

Typical load:

- 4 containers with lid, max. dimensions of container L=600 x W=300 x H=300 mm (without lid max. H=270 mm)

Dimensions

W=640 x H=623 x D=835 mm

Empty weight

17 kg





7. Bottle and glassware racks

☐ Rack with nozzles for baby bottles

Application: Baby bottles and baby bottle teats.

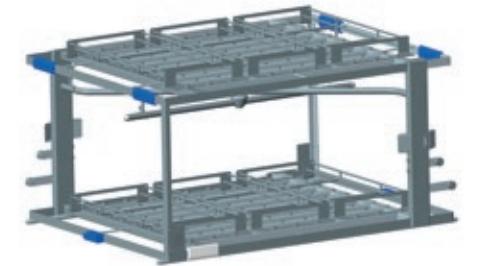
010109339

Typical load:

- Max. 126 baby bottles 125 ml
or
- Max. 126 baby bottles 250 ml
or
- Max. 144 large/max. 216 small teats
or
- Max. 120 locking caps

Accessories	MMM No.	No.	Capacity per insert module
Insert for baby bottles 125 ml	010109341	6	21 baby bottles 125 ml
Insert for baby bottles 250 ml	010109342	6	21 baby bottles 250 ml
Insert for insert module for baby bottle teats	010486455	6	24 small / 40 large teats
Insert module for baby bottle locking caps with lid	010486453	6	20 locking caps

Dimensions	Empty weight
W=640 x H=420 x D=835 mm	16 kg



☐ Insert module for baby bottles 125 ml with lid

Application: Insert with lid for 21 baby bottles 125 ml.

010109341

Dimensions

W=190 x H=125 x L=425 mm



Insert module for baby bottles 250 ml with lid

Application: Insert with lid for 21 baby bottles 250 ml.

010109342

Dimensions

W=190 x H=190 x L=425 mm



Rack for secretion flasks

Application: Secretion flasks.

010109336

Typical load:

20 secretion flasks on screwable single nozzles
 ø max. bottle neck inside 60 mm
 ø max. bottle neck outside 140 mm
 Nozzle length max: 340 mm

Dimensions

W=640 x H=420 x D=835 mm

Empty weight

16 kg



Insert module for baby bottle teats with lid

Application: Insert with lid for either max. 24 large
 or max. 40 small wide neck teats.

010486455

Dimensions

W=179 x H=90 x L=429 mm



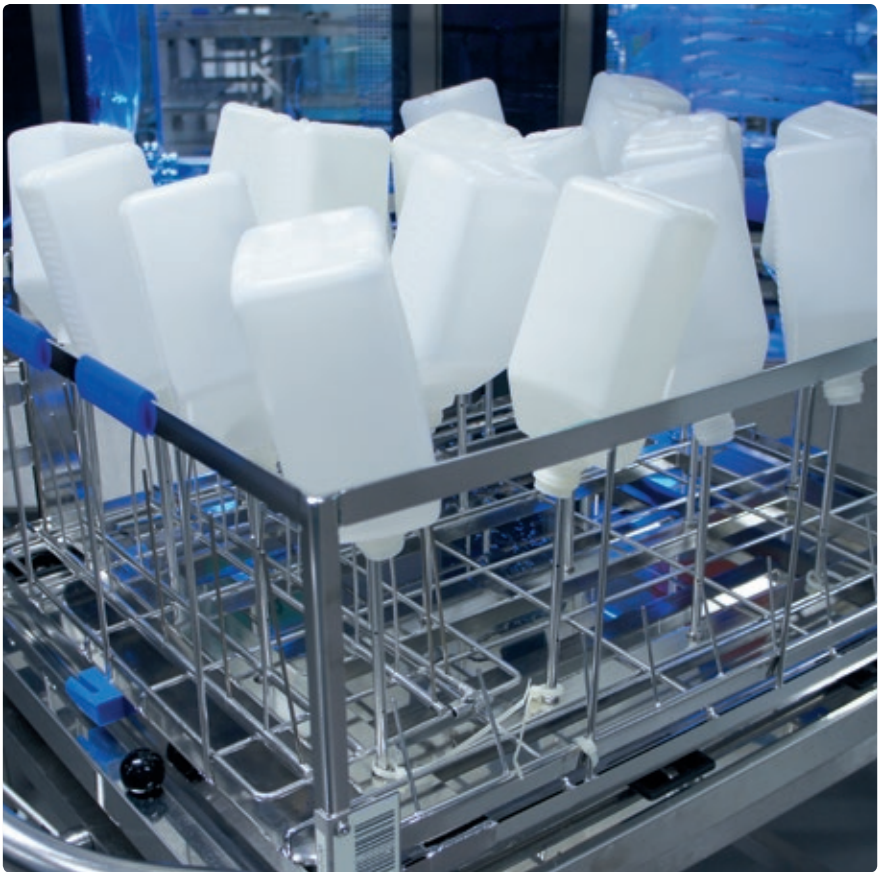
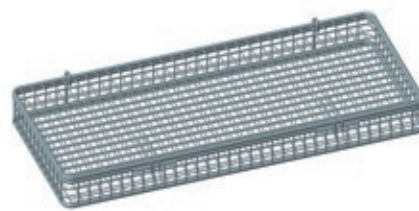
Insert module for baby bottle locking caps with lid

Application: Insert with lid for up to 20 baby bottle locking caps.

010486453

Dimensions

W=180 x H=40 x L=425 mm



8. Inserts

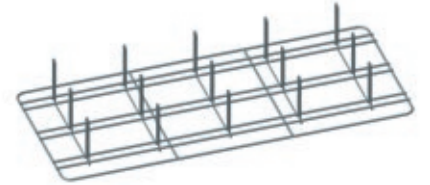
Insert module for OR lamp handles

Application: Insert for up to 15 OR lamp handles.

010109346

Dimensions

W=250 x H=86.5 x L=590 mm



Insert module for kidney basins / OR shoe soles

Application: Insert for up to 10 kidney basins or up to 10 OR shoe soles.

010109343

Dimensions

W=250 x H=86.5 x L=590 mm



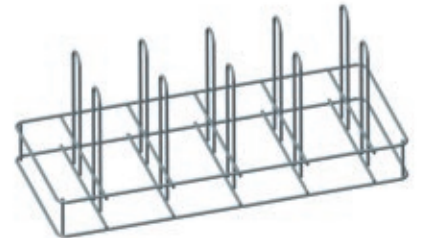
Insert module for OR shoes up to size 42

Application: Insert for up to 10 OR shoes up to size 42.

010109348

Dimensions

W=250 x H=230 x L=590 mm



Insert module for OR shoes up to size 48

Application: Insert for up to 6 OR shoes up to size 48.

010109347

Dimensions

W=250 x H=173 x L=590 mm



Insert module for bowls 125

Application: Insert for up to 12 bowls 125 ml.

010109344

Dimensions

W=370 x H=125.4 x L=590 mm



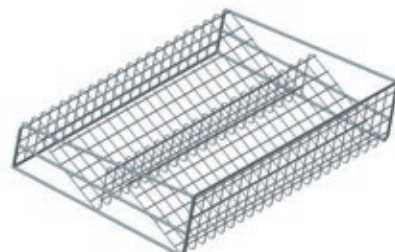
Insert module for bowls 200

Application: Insert for up to 6 bowls 200 ml.

010109345

Dimensions

W=370 x H=125.5 x L=590 mm



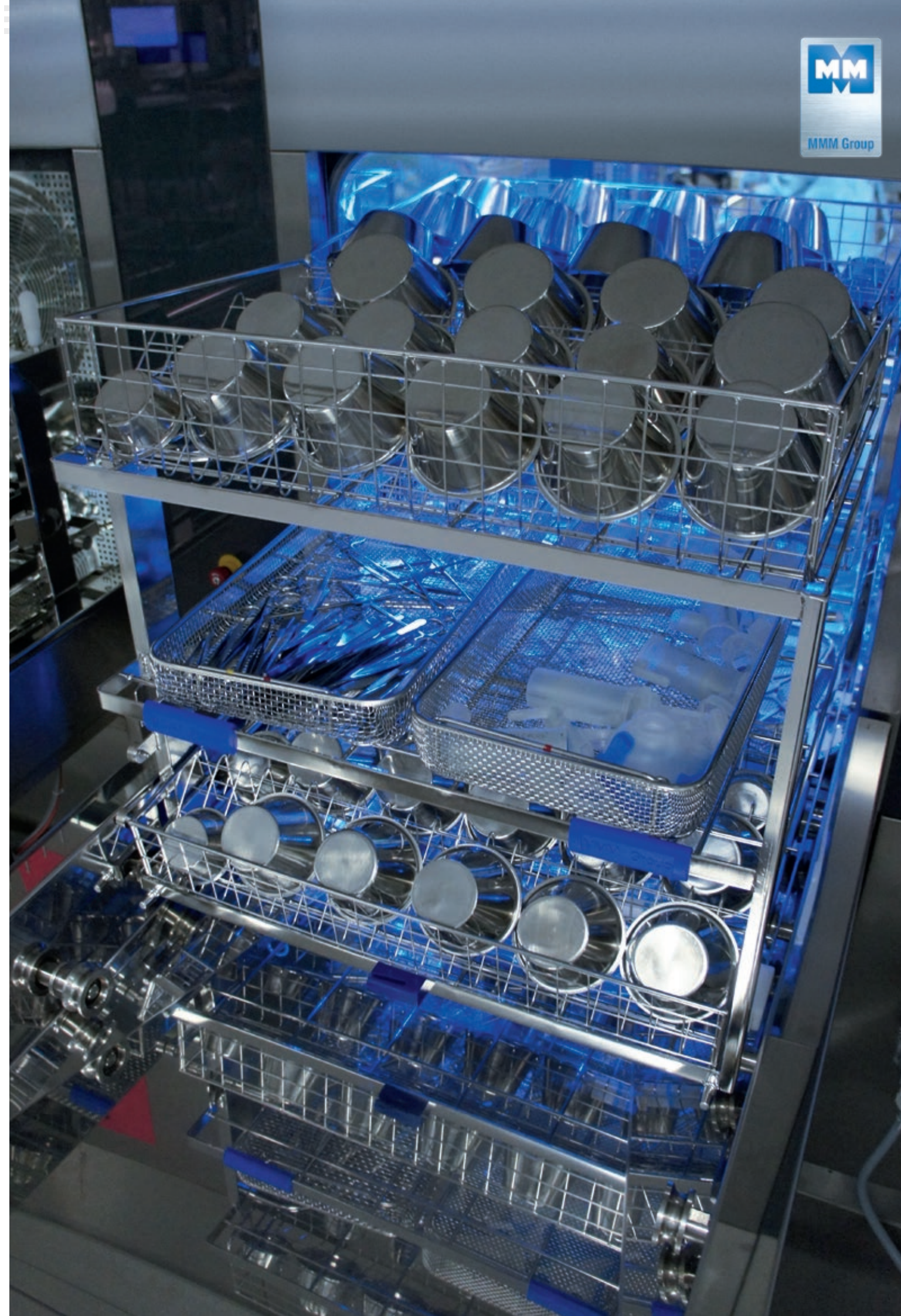
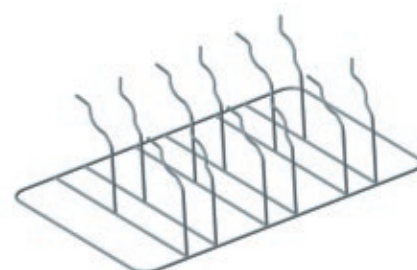
Insert module for measuring jugs 1 l

Application: Insert for up to 6 measuring jugs 1L.

010486454

Dimensions

W=380 x H=203 x L=590 mm





9. Small parts/nozzles



Plate with barcode identification

Application: Racks UPL 15.

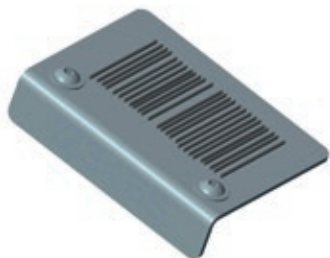
010109359

Typical load:
Consecutively numbered, 2 plates

Including:
2 brackets per packaging unit

Dimensions

B=49 x H=18 x L=66 mm



CoolTouch handle

Application: Racks UPL 15.

010115305

Typical load:
4 pieces per packaging unit

Dimensions

W=16 x H=30 x L=90 mm



Plug-in connector set straight (set of 2 pieces)

Application: For quickly installing and removing a flush strip at the M8x1 connections of the racks incl. end cap.

010510772

Typical load:
2 pieces per packaging unit

Dimensions

Thread M8x1, L = 62 mm



Blind screw cap M8x1 (set of 5 pieces)

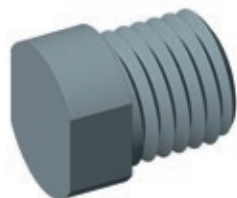
Application: For sealing M8x1 connections on racks.

010125417

Typical load:
5 pieces per packaging unit

Dimensions

M8x1



Screw socket M8x1 / M8x1 (set of 4 pieces)

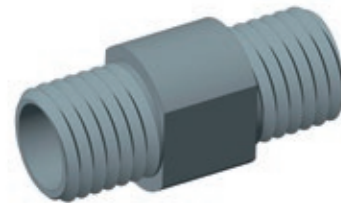
Application: For screwing accessories.

010122242

Typical load:
4 pieces per packaging unit

Dimensions

M8x1 to M8x1 / L = 21 mm



Luer-Lock male, M8x1 (set of 5 pieces)

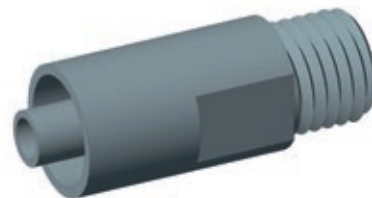
Application: MIS and cavity instruments.

010118620

Typical load:
5 pieces per packaging unit

Dimensions

Thread M8x1, 24 mm long



Luer-Lock female, M8x1 (set of 5 pieces)

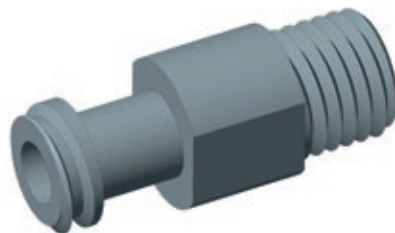
Application: MIS and cavity instruments.

010109363

Typical load:
5 pieces per packaging unit

Dimensions

Thread M8x1, 24 mm long



Locking cap Luer-Lock male, f (set of 10 pieces)

Application: For Luer-Lock connections (material plastic).

010505010

Typical load:
10 pieces per packaging unit



Luer-Lock female, for tube \varnothing I =4 mm (set of 5 pieces)

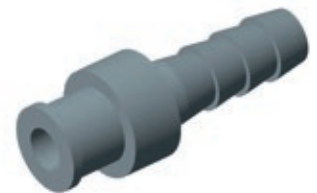
Application: Eye instruments and silicone tubes with 3 mm inside diameter.

010511382

Typical load:
5 pieces per packaging unit

Dimensions

\varnothing 0 10 mm, length 27 mm



Luer-Lock female, for tube \varnothing I =6 mm (set of 5 pieces)

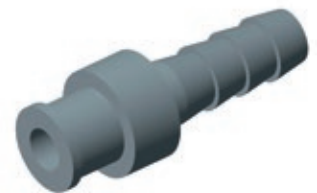
Application: MIS instruments and tubes.

010109361

Typical load:
5 pieces per packaging unit

Dimensions

\varnothing 0 10 mm, length 27 mm



Luer-Lock female, for tube \varnothing I =8 mm (set of 5 pieces)

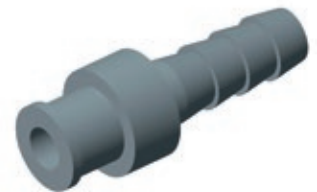
Application: MIS instruments and tubes.

010118618

Typical load:
5 pieces per packaging unit

Dimensions

\varnothing 0 10 mm, length 30 mm



Luer-Lock male, for tube \varnothing I =6 mm (set of 5 pieces)

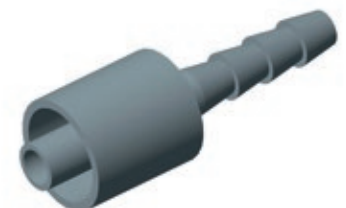
Application: MIS instruments and tubes.

010109360

Typical load:
5 pieces per packaging unit

Dimensions

\varnothing 0 10 mm, length 30 mm



☐ Luer-Lock male, for tube \varnothing I =8 mm (set of 5 pieces)

Application: MIS instruments and tubes.

010109362

Typical load:
5 pieces per packaging unit

Dimensions

\varnothing 0 10 mm, length 34 mm



☐ Tube spout with thread M8x1 (set of 5 pieces)

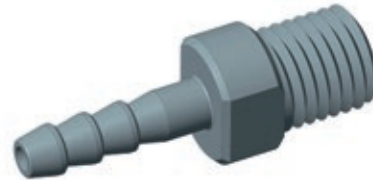
Application: Tube connection with thread M8x1.
Suitable for silicone tubes with 3 mm inside diameter.

010503276

Typical load:
5 pieces per packaging unit

Dimensions

\varnothing 0 10 mm, length 28 mm



☐ Tube spout conical (set of 5 pieces)

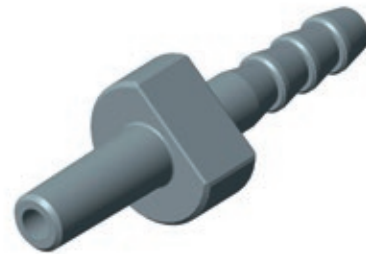
Application: Tube connection conical.
Suitable for silicone tubes with 3 mm inside diameter.

010505009

Typical load:
5 pieces per packaging unit

Dimensions

\varnothing 0 10 mm, length 31 mm



☐ Nozzle adapter M8x1 (set of 5 pieces)

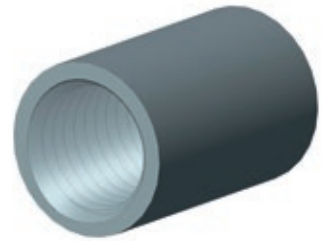
Application: For connecting nozzles and Luer-Lock with threaded connection.

010505013

Typical load:
5 pieces per packaging unit

Dimensions

M 8x1 / L=15 mm



☐ Flush adapter complete (set of 2 pieces) \varnothing I 20

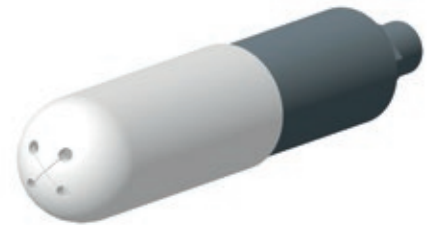
Application: MIS instruments, MIS insert module short or long.

010114069

Consisting of:
Holder cap
Holder pipe
Screw socket M8x1
2 pieces per packaging unit

Dimensions

\varnothing 0 26 x \varnothing I 20 mm / L=155 mm



☐ Flush adapter complete (set of 2 pieces) \varnothing I 12

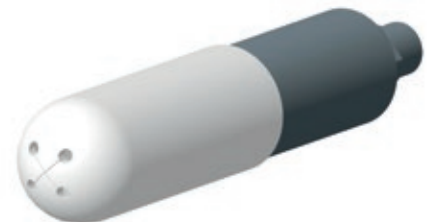
Application: MIS instruments, MIS insert module short or long.

010114068

Consisting of:
Holder cap
Holder pipe
Screw socket M8x1
2 pieces per packaging unit

Dimensions

\varnothing 19 x \varnothing I 12 mm / L=112 mm



☐ Adapter tube \varnothing I 12x L=60 mm / M8x1 (set of 4 pieces)

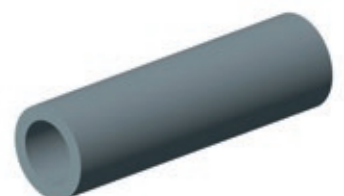
Application: MIS instruments for flush adapter 010114068, colour: white.

010122238

Typical load:
4 pieces per packaging unit

Dimensions

\varnothing 0=17.5 x \varnothing I=12 mm / L=60 mm



Adapter tube \varnothing I 20x L=100 mm / M8x1 (set of 4 pieces)

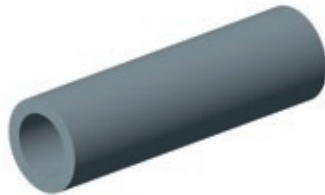
Application: MIS instruments for flush adapter 010114069, colour: white.

010122239

Typical load:
4 pieces per packaging unit

Dimensions

\varnothing O=25.5 x \varnothing I=20 mm / L=100 mm



Flush adapter \varnothing I 26

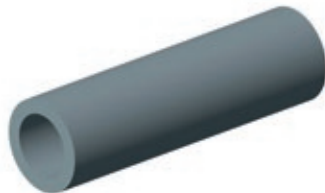
Application: For special MIS instruments. Suitable for use in rack MIS (max. 2 pieces per rack). Without silicone cap.

010504991

Typical load:
Holder pipe (L= 100 mm), \varnothing I = 26 mm, screw socket M8x1

Dimensions

\varnothing O=36 x \varnothing I 26 mm / L=113.5 mm



Adapter tube \varnothing I 23x L=51 mm (set of 4 pieces)

Application: MIS instruments for flush adapter 010114069.

010122240

Typical load:
4 pieces per packaging unit

Dimensions

\varnothing O=26 x \varnothing I=23 mm / L=51 mm



Adapter tube \varnothing I 16x L=48 mm (set of 4 pieces)

Application: MIS instruments for flush adapter 010114068.

010122241

Typical load:
4 pieces per packaging unit

Dimensions

\varnothing O=19 x \varnothing I=16 mm / L=48 mm



Nozzle with side holes (set of 4 pieces) \varnothing O 3x40/M8x1

Application: MIS and cavity instruments, MIS insert modules.

010125203

Typical load:
4 pieces per packaging unit

Dimensions

M8x1 / \varnothing O=3 mm / L=40 mm



Nozzle with side holes (set of 4 pieces) \varnothing O 3x70/M8x1

Application: MIS and cavity instruments, MIS insert modules.

010125202

Typical load:
4 pieces per packaging unit

Dimensions

M8x1 / \varnothing O=3 mm / L=70 mm



Nozzle with side holes (set of 4 pieces) \varnothing O 3x120/M8x1

Application: MIS and cavity instruments, MIS insert modules.

010125201

Typical load:
4 pieces per packaging unit

Dimensions

M8x1 / \varnothing O=3 mm / L=120 mm



Nozzle with side holes (set of 4 pieces) \varnothing O 4x40/M8x1

Application: MIS and cavity instruments, MIS insert modules.

010122243

Typical load:
4 pieces per packaging unit

Dimensions

M8x1 / \varnothing O=4 mm / L=40 mm



Nozzle with side holes (set of 4 pieces) Ø O 4x70/M8x1

Application: MIS and cavity instruments, MIS insert modules.

010122244

Typical load:
4 pieces per packaging unit

Dimensions

M8x1 / ø O=4 mm / L=70 mm



Nozzle with side holes (set of 2 pieces) Ø O 6x250/M8x1

Application: MIS and cavity instruments, MIS insert modules.

10505012

Typical load:
2 pieces per packaging unit

Dimensions

M8x1 / ø O=6 mm / L=250 mm



Nozzle with side holes (set of 4 pieces) Ø O 4x120/M8x1

Application: MIS and cavity instruments, MIS insert modules.

010122245

Typical load:
4 pieces per packaging unit

Dimensions

M8x1 / ø O=4 mm / L=120 mm



Nozzle with side holes (set of 2 pieces) Ø O 8x150/M8x1

Application: MIS and cavity instruments, MIS insert modules.

10505004

Typical load:
2 pieces per packaging unit

Dimensions

M8x1 / ø O=6 mm / L=150 mm



Nozzle with side holes (set of 2 pieces) Ø O 6x50/M8x1

Application: MIS and cavity instruments, MIS insert modules.

10505007

Typical load:
2 pieces per packaging unit

Dimensions

M8x1 / ø O=6 mm / L=50 mm



Nozzle with side holes (set of 2 pieces) Ø O 8x290/M8x1

Application: MIS and cavity instruments, MIS insert modules.

010511094

Typical load:
2 pieces per packaging unit

Dimensions

M8x1 / ø O=8 mm / L=290 mm



Nozzle with side holes (set of 2 pieces) Ø O 6x150/M8x1

Application: MIS and cavity instruments, MIS insert modules.

010507812

Typical load:
2 pieces per packaging unit

Dimensions

M8x1 / ø O=6 mm / L=150 mm



Nozzle with side holes (set of 2 pieces) Ø O 8x340/M8x1

Application: MIS and cavity instruments, MIS insert modules.

010511070

Typical load:
2 pieces per packaging unit

Dimensions

M8x1 / ø O=6 mm / L=340 mm



Nozzle spacer 21 mm

Application: For secretion cups.

010508901

Typical load:
1 piece per packaging unit

Dimensions

M8x1 / Ø 20 x 26 mm



Nozzle spacer 55 mm

Application: For secretion cups.

010508900

Typical load:
1 piece per packaging unit
Standard in rack for secretion flasks 010109336 (20 pieces).

Dimensions

M8x1 / Ø 55 x 26 mm



Nozzle spacer 68 mm

010508902

Typical load:
1 piece per packaging unit

Dimensions

M8x1 / Ø 68 x 26 mm



Bracket for breathing bag (set of 2 pieces)

Application: For nozzle pipe Ø 8 x L=340 mm.

010508903

Typical load:
2 pieces per packaging unit
Standard in: 9 pieces in rack anaesthesia drum 010109332.

Dimensions

M8x1 / H=42 x W=16 mm



Spring clip small

Application: For fixing breathing tubes with diameter 5-15 mm.

010127119

Typical load:
For subsequent addition
5 pieces per packaging unit
24 pieces as standard in AN rack 010109332

Dimensions

W=28 x H=35 mm



Spring clip large

Application: For fixing breathing tubes with diameter 21-15 mm.

010127117

Typical load:
For subsequent addition
5 pieces per packaging unit
6 pieces as standard in AN rack 010109332

Dimensions

W=17 x H=35 mm



Silicone tube 6x1.5x500 mm

Application: For shortening as required and for connecting flush strips or Luer-Lock adapters.

010505019

Suitable:
Luer-Lock f (010118618) and
Luer-Lock m (010109362)

Dimensions

6 x 1.5 x 500 mm



Silicone tube 3x1.5x1000 mm

Application: For shortening as required and for connecting Luer-Lock adapters.

010505018

Suitable:
Luer-Lock f (010109361) and
Luer-Lock m (010109360)

Dimensions

3 x 1.5 mm x 1000 mm



10. Instrument trays

☐ DIN tray 250 x 485 x 50 mm

Application: Surgical instruments.

010123962

Design:
Wire mesh with fold down handles

Dimensions

W=250 x H=50 x L=485 mm



☐ DIN tray 250 x 245 x 50 mm

Application: Surgical instruments.

010123963

Design:
Wire mesh with fold down handles

Dimensions

W=250 x H=50 x L=245 mm



☐ DIN tray 250 x 485 x 70 mm

Application: Surgical instruments.

010123964

Design:
Wire mesh with fold down handles

Dimensions

W=250 x H=70 x D=485 mm



☐ DIN tray 250 x 245 x 70 mm

Application: Surgical instruments.

010123965

Design:
Wire mesh with fold down handles

Dimensions

W=250 x H=70 x D=245 mm



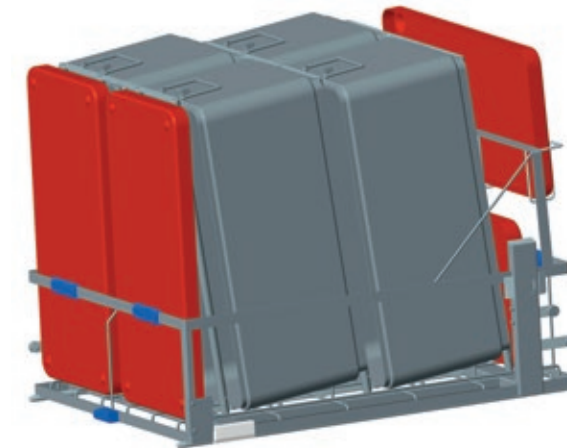


11. Configuration examples

☐ Rack for 1 StU container with lid

4 sterile goods containers with lid 1 StU

010109328



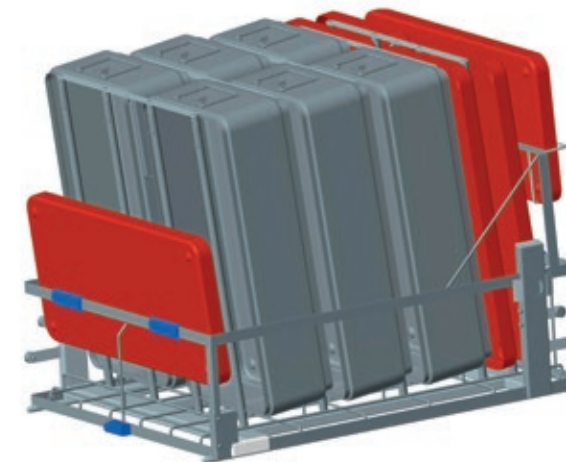
Container dimensions

L=600 x W=300 x H=300 mm

☐ Rack for 1/2 StU container with lid

6 sterile goods containers with lid 1/2 StU

010109327



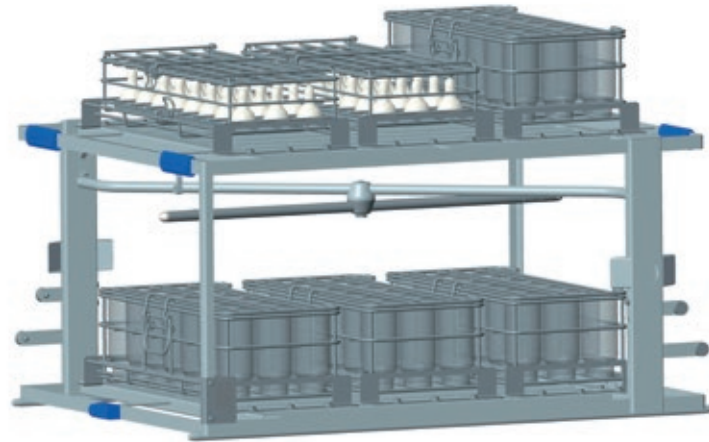
Container dimensions

L=600 x W=300 x H=150 mm

Rack with nozzles for baby bottles

010109341 or 010109342: 4 insert modules for 21 baby bottles 125 or 250 ml (total 63 bottles). 010486455: 2 inserts for baby bottle teats (total 48 bottle teats)

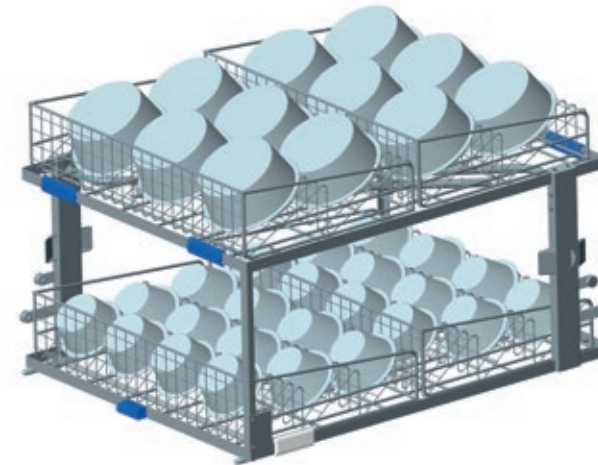
010109339



Rack 2-level UPL 15

010109344: 2 insert modules for bowls 125 (at bottom – total 24 bowls)
010109345: 2 insert modules for bowls 200 (at top – total 12 bowls)

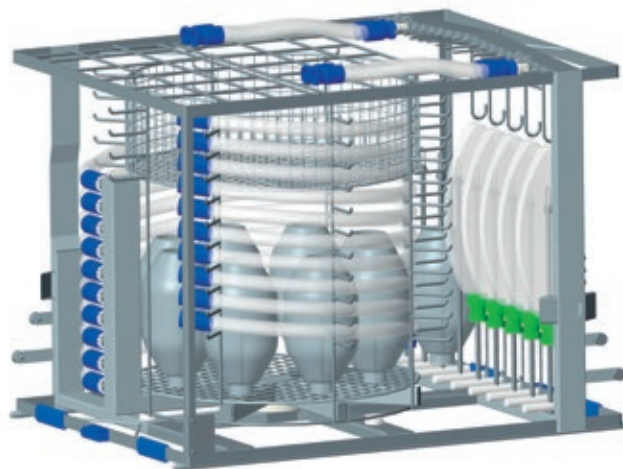
010109311



Rack anaesthesia drum

Anaesthesia sets consisting of max. 26 breathing tubes
10 tubes ø 22 mm with a length of 6 to 1500 mm / 4 to 2000 mm
4 tubes ø 22 mm with a length of up to 500 mm
6 tubes ø 14 mm with a length of 4 to 1500 mm / 2 to 1000 mm
6 suction tubes with a length of up to 500 mm
5 breathing pouches
7 breathing masks, etc.

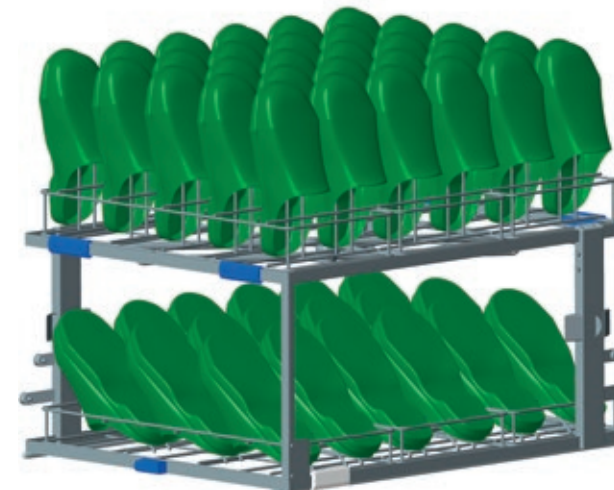
010109332



Rack 2-level UPL 15

010109347: 3 inserts for OR shoes up to size 48 (at top – total 18 shoes)
010109348: 3 inserts for OR shoes up to size 42 (at bottom – total 30 shoes)

010109311



Rack flex 4-level UPL configuration 4 levels

Basic rack with 3 level grids for 12 DIN instrument trays

010508720



Rack flex 4-level UPL configuration 1 level in the middle

Basic rack with 1 level grid in the middle for:
6 insert modules for kidney basins 010109343
6 insert modules for OR lamp handles 010109346
4 insert modules for bowls 125 010109344
4 insert modules for bowls 200 010109344

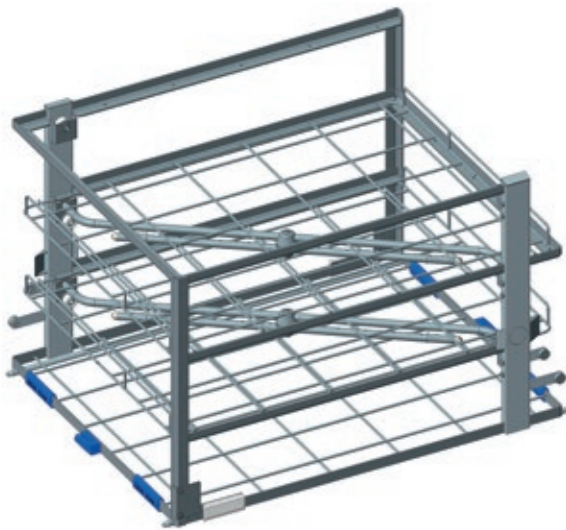
010508720



Rack flex 4-level UPL configuration without top level

Basic rack with 2 level grids for 6 DIN instrument trays on the bottom levels and insert modules on the top level:
3 insert modules for kidney basins 010109343
3 insert modules for OR lamp handles 010109346
2 insert modules for bowls 125 010109344
2 insert modules for bowls 200 010109344

010508720



Rack flex 4-level UPL configuration without bottom level

Basic rack with 2 level grids for 6 DIN instrument trays on the top levels and insert modules on the bottom level:
3 insert modules for kidney basins 010109343
3 insert modules for OR lamp handles 010109346
2 insert modules for bowls 125 010109344
2 insert modules for bowls 200 010109344

010508720



Rack MIS with 2 module levels with MIS modules

MIS basic rack with 2 module levels 010125437 equipped with:
2 MIS modules long 010508028
2 MIS modules short 010508029

010125437



Rack for robotic instruments for da Vinci S and Si (IS 2000/3000)

Rack for robotic instruments 010488053 equipped with:
2 modules for EndoWrist instruments da Vinci 010488028

010488053



Rack MIS with 2 module levels with eye modules

MIS basic rack with 2 module levels 010125437 equipped with:
4 MIS eye modules long 010508031

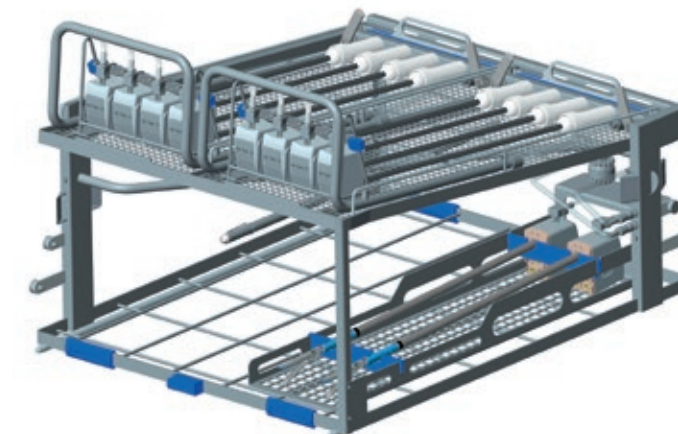
010125437



Rack for robotic instruments for da Vinci Xi (IS 4000)

Rack for robotic instruments long 010504975 equipped with:
2 modules for EndoWrist instruments da Vinci Xi 010504977
1 module for instruments da Vinci Xi Stapler 010504980

010504975





MMM Group

MMM has been operating worldwide as one of the leading system providers in the service of health since 1954. With a complete range of products and services relating to all aspects of cleaning, disinfection and sterilization systems for the areas of **Healthcare** and **Life Science**, MMM has positioned itself as a crucial quality and innovation driver in the German and international

market. Our products are individually adapted to the requirements of our customers all over the world. The high vertical range of manufacturing in our production plants ensures that we fulfil the strictest demands of quality in the medical technology sector. More than 1100 employees apply their expertise and dedication to the mission of the MMM Group: **Protecting human health.**



Health
made in Germany

MMM Münchener
Medizin Mechanik GmbH
Simmelweisstraße 6
82152 Planegg / Munich, Germany
Tel.: +49 89 89918-0
Fax: +49 89 89918-118
www.mmmgroup.com

